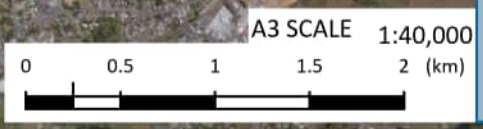
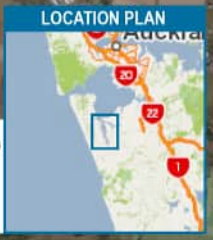




LEGEND

- ▲ NZS Oyster Monitoring Site
- ◆ NZS Sediment/Benthic Biota Monitoring Site
- Auckland Council Coastal and Estuarine Water Quality Monitoring Site
- Auckland Council Sediment and Benthic Biota Monitoring Site
- Outfall Discharge Point
- Watercourse
- Artificial Watercourse
- Tributary
- Spillway
- Zone of Influence
- Site
- ITA Area



Tonkin+Taylor
 www.tonkintaylor.co.nz
 Exceptional thinking together

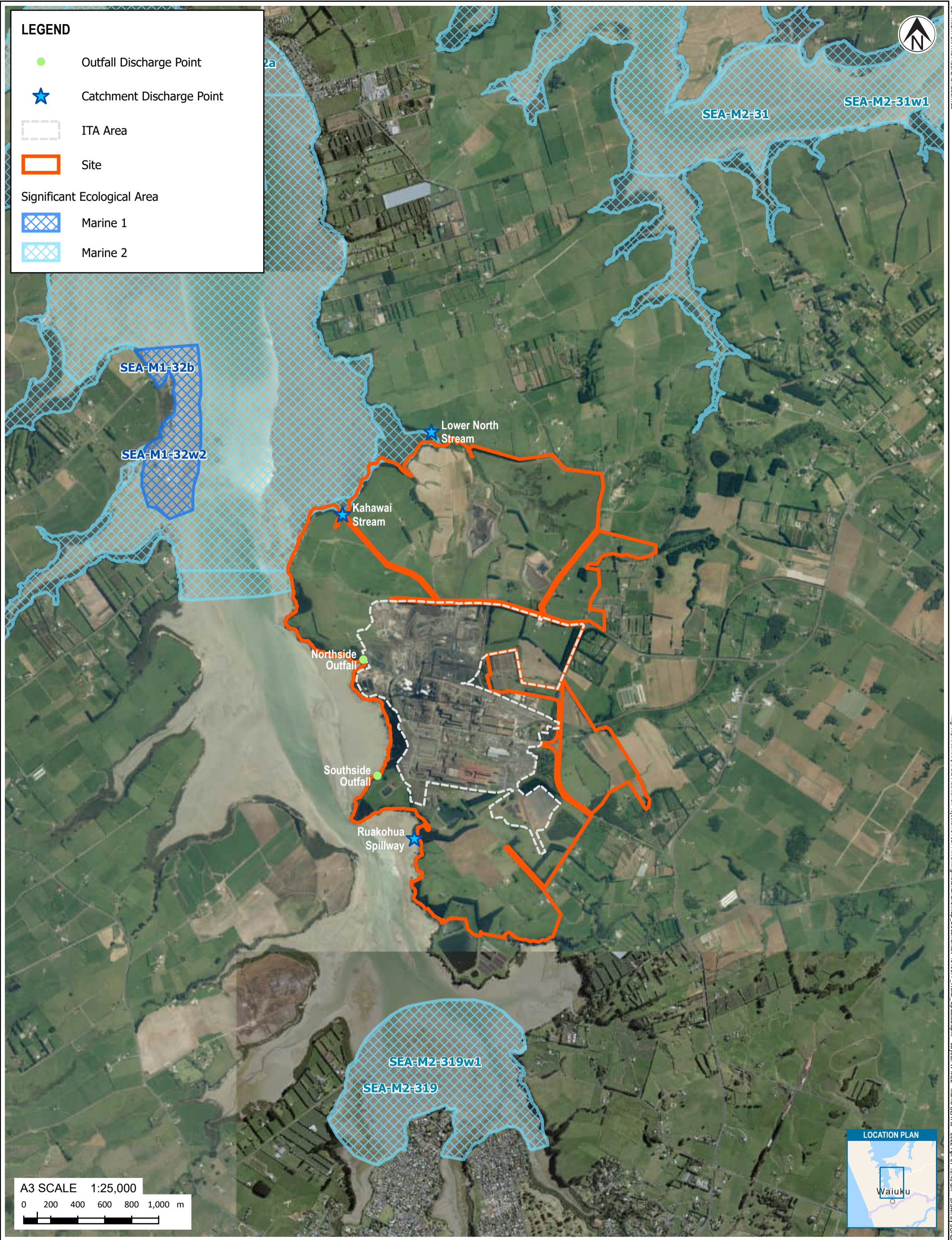
NOTES:
 Basemap: Sourced from the LINZ Data Service and licensed for re-use under the Creative Commons Attribution 4.0 New Zealand licence
 Land Information New Zealand, Eagle Technology

0	First version	JORB	ANTH	28/06/21
1	Second version	JORB	METU	06/04/22
REV	DESCRIPTION	GIS	CHK	DATE

PROJECT No. 1010577.2000		
DESIGNED	JORB	APR.22
DRAWN	JORB	APR.22
CHECKED	METU	APR.22
<i>[Signature]</i>		
APPROVED	DATE	

CLIENT	NZ STEEL		
PROJECT	RECONSENSING GLENBROOK STEEL MILL		
TITLE	NZ STEEL AND AUCKLAND COUNCIL MONITORING SITES AND THE MODELLED ZONE OF INFLUENCE (ZOI), AS DEFINED BY THE DHI (2022) REPORT		
SCALE (A3)	1:40,000	FIG No.	FIGURE W-ME1
REV	1		

COPYRIGHT ON THIS FIGURE IS RESERVED
 \\grouplocal\coporate\mckenzi\Projects\1010577\Working\Aerial\GISMap_Document\1010577_Water_Updated.aprx Layout: W-ME2 - Marine SEA A3 2022-Apr-07 10:40 am Drawn by: JORB



LEGEND

- Outfall Discharge Point
- ★ Catchment Discharge Point
- ITA Area
- Site

Significant Ecological Area

- Marine 1
- Marine 2

A3 SCALE 1:25,000
 0 200 400 600 800 1,000 m



www.tonkintaylor.co.nz
 Exceptional thinking together

NOTES:
 Basemap: Sourced from LINZ and licensed for reuse under Creative Commons 4.0.

0	First version	JORB	ANTH	28/06/21
REV	DESCRIPTION	GIS	CHK	DATE

PROJECT No. 1010577	
DESIGNED	JORB JUN.21
DRAWN	JORB JUN.21
CHECKED	ANTH JUN.21
 APPROVED DATE	

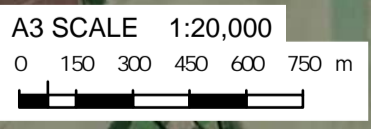
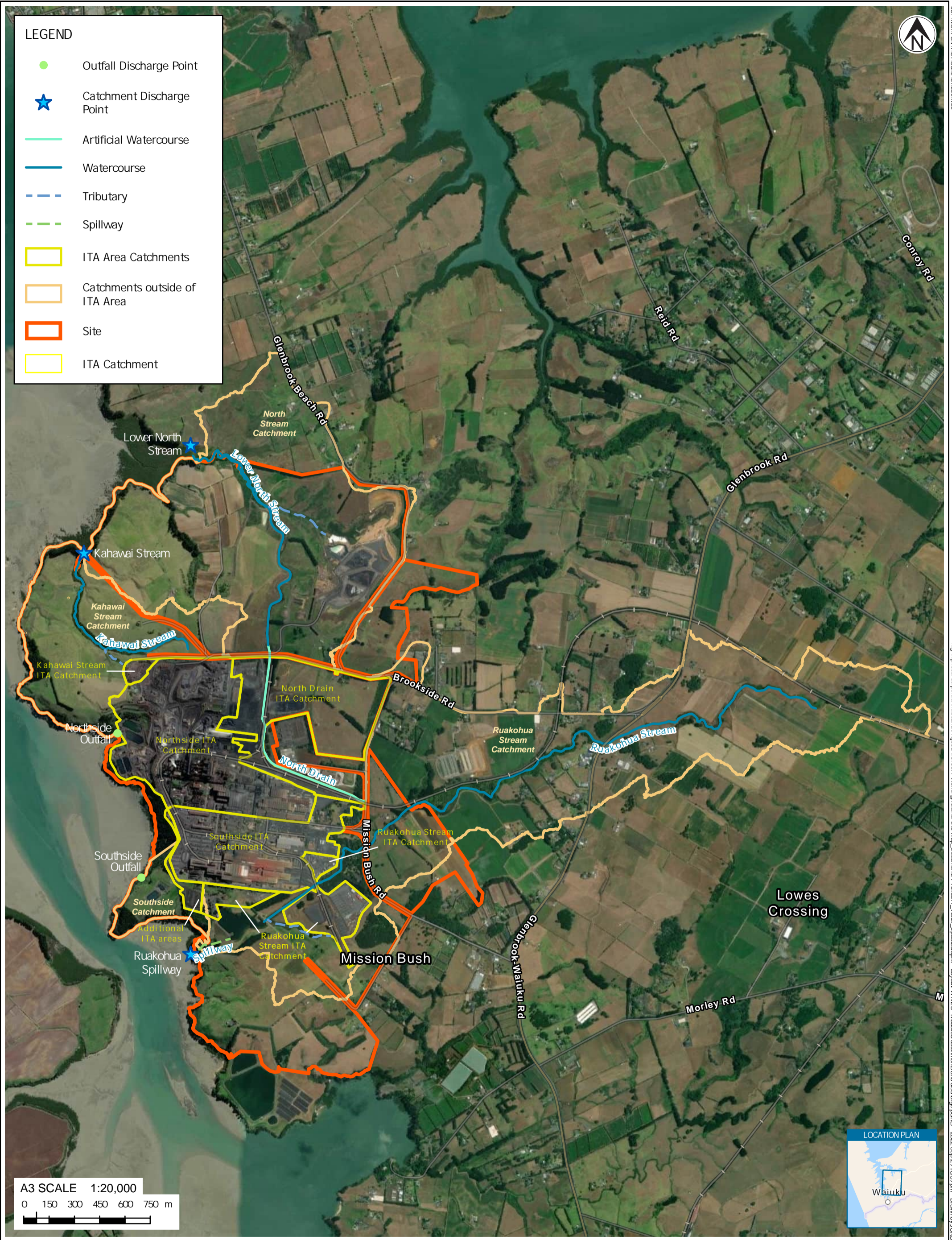
CLIENT	NZ STEEL
PROJECT	RECONSENSING GLENBROOK STEEL MILL
TITLE	AUP MARINE SIGNIFICANT ECOLOGICAL AREAS
SCALE (A3)	1:25,000
FIG No.	FIGURE W-ME2
REV	0

COPYRIGHT ON THIS FIGURE IS RESERVED
 \\papl\local\corporate\uk\users\Projects\1010577\Northside\GIS\Map_Documents\FIG037_Matier_Updated.aprx Layout: WAK-3 - Modelled catchments and discharge points - 2022-Sep-29 10:39 am Drawn by JORB



LEGEND

- Outfall Discharge Point
- ★ Catchment Discharge Point
- Artificial Watercourse
- Watercourse
- - - Tributary
- - - Spillway
- ITA Area Catchments
- Catchments outside of ITA Area
- Site
- ITA Catchment



Tonkin+Taylor
 www.tonkintaylor.co.nz
 Exceptional thinking together

NOTES:
 Basemap: Sourced from LINZ and licensed for reuse under Creative Commons 4.0

0	First version	JORB	ANTH	28/06/21
1	Second version	JORB	CHSA	29/09/22
REV	DESCRIPTION	GIS	CHK	DATE

PROJECT No. 1010577	
DESIGNED	JORB SEP.22
DRAWN	JORB SEP.22
CHECKED	CHSA SEP.22
<i>CHSA</i>	
APPROVED	DATE

CLIENT	NZ STEEL
PROJECT	RECONSENSING GLENBROOK STEEL MILL
TITLE	MODELLED CATCHMENTS AND DISCHARGE POINTS
SCALE (A3)	1:20,000
FIG No.	FIGURE W-ME3
REV	1

